

Life ConneXion

To reach the nations with the hope of Christ,
through our words and our works.

Annual Report 2024

Policy Plan 2025–2030

(In accordance with the ANBI public disclosure requirements)

People aren't searching for the Light—they simply want sight...

Published by Life Connexion © 2025.

Chamber of Commerce: 50207040

RSIN number: 813790256

De Brand 32

3823 LK Amersfoort

Tel +31 33 8200337

Email: info@lifeconnexion.nl

Website: www.lifeconnexion.nl

Bank: NL73ABNA0413667774

Table of content

Table of content	3
I Mission and Objectives	4
Our vision	4
Our Mission	4
Our Conviction	4
Our Approach	4
Our Values	4
Our Invitation	4
Strategic Approach	5
II The organisation	5
Legal Representation	6
Pastoral Responsibilities	6
Supervisory Council (ie the advisory board)	6
Legal Responsibilities	7
III. Finance and Stewardship	8
Tithes, Offerings, and Contributions	8
Financial Principles and Procedures	8
Budgeting and Expenditures	9
Appendices	10
Appendix 1 – Statement of Faith	10
Appendix 2 – Report 2017	11
Appendix 3 – Report 2018	12
Appendix 4 – Report 2019	13
Appendix 5 – Report 2020	14
Appendix 6 – Report 2021	15
Appendix 7 – Report 2022	16
Appendix 8 – Report 2023	17
Appendix 9 – Report 2024	18
Appendix 10 – Elaboration on the vision 2025	19

I Mission and Objectives

Life ConneXion was originally founded in 1994 under the name "Amersfoort Christian Center" and has since evolved into a dynamic and revolutionary faith community.

Our vision

It is our vision to reach the nations with the hope of Christ, through our words and our works.

Our Mission

At Life ConneXion, we believe the Church is meant to be a relevant and transformative force in today's world. Not by holding on to outdated structures, but by reimagining what it means to be Church—fully integrated into everyday life and the fabric of society.

Our Conviction

After years of discovery and reflection, we've realized that trying to integrate the Church into society through traditional models often comes at the cost of its relevance and influence. That's why we've chosen a different path—one that doesn't resist culture, but engages it meaningfully. Just as the early Church in the book of Acts met in homes and was deeply woven into the rhythms of daily life, we are seeking new expressions of church that are seamlessly integrated into the fabric of society.

But integration does not mean invisibility. Like salt scattered across a meal, the Church must be present within the world to bring out its flavor—to influence, to uplift, and to reveal what is good. True impact happens not by standing apart, but by being meaningfully involved—deeply connected yet distinctly life-giving.

Our Approach

We are building a community that:

- **Inspires** authentic, Spirit-filled living;
- **Equips** people to grow spiritually and personally;
- **Guides** with love and truth, without pressure to conform;
- **Celebrates** individual identity through creative expression.

We believe that each person is uniquely designed by God—with gifts, passions, and creativity that reflect His nature. Our identity is not something to suppress for the sake of community, but something to discover and express *within* community. True transformation happens when people live from a place of purpose, not survival. A flourishing life glorifies God.

Our Values

- **Safety** – a community where vulnerability is welcomed and honored.
- **Freedom** – space to grow, to discover, and to become.
- **Connection** – with God, with each other, and with the world around us.
- **Creativity** – because the world needs people who are fully alive, not just getting by.

Our Invitation

We invite you to join a movement that is redefining church—not as a building or a weekly ritual, but as a living, breathing expression of God's love and truth in this world. A Church

without walls. Without masks. Without pressure to fit in. A spiritual movement that releases people to live boldly, create freely, and shine fully.

Strategic Approach

There are seven key principles we intentionally emphasize—foundational values that lay the groundwork for transformation:

1. **The Church is focused on transformation, not evacuation.**
We are not preoccupied with the imminent rapture, even though we long for it with great expectation. Our horizon isn't limited to 10 or 20 years, but spans multiple generations.
2. **The Church is a means, not an end.**
While this is a familiar phrase, we often still fall into the habit of glorifying the church's role by urging everyone to be faithful in attendance, service, giving, and inviting guests. At Life ConneXion, we intentionally position the church as a servant in the lives of its members and visitors.
3. **A Church free from religious traditions.**
Traditions have value and can be powerful, but they can also become paralyzing. At Life ConneXion, every tradition is open to change. What was once meaningful is not automatically holier than what we may feel led to create today.
4. **Belonging before conversion.**
The emphasis is not on calling people to immediate conversion, but on cultivating an inviting sense of belonging. Transformation—changing minds and behaviors—will naturally follow.
5. **A holistic approach.**
We do not divide earthly and heavenly matters, or separate laypeople from the sacred, or secular from spiritual. God created all things, and we are called to steward them with wisdom and reverence.
6. **No hierarchy, titles, or power structures.**
We are one body, with every part having a role—many of them vital. Communication, alignment, and structure are important, as are respect and spiritual authority, but these are not tied to titles or positions.
7. **The Bible is a guide, not a rulebook.**
We do not impose the Bible as a legal code where every violation strains our relationship with God. Rather, we embrace it as a guide that offers wisdom for how life is meant to be lived. It is our aim to bring the good news of grace and salvation as a living message and not as dead dogma's and doctrines. Faith should be a means to align with your purpose and not to avoid punishment.

II The organisation

The leadership

Gertjan and Andria Goldschmeding have served as the senior pastors of Life ConneXion since 1998. Gertjan is known for his radical yet practical teaching style, which challenges individuals to live life to the fullest. With a background in business administration and economics, he has coached numerous entrepreneurs and founded Dutch Business Boosters in 2009—a company that trains and supports individuals in realizing their business dreams. He also owns and leads multiple other companies.

Their aim has always been to remain financially independent of Life ConneXion. They receive compensation only when the budget allows and within limits approved by the board. Gertjan is also a recognized international speaker and regularly ministers in Asia, Africa, North America, and across Europe. He dedicates multiple days a week to ministry and is available for speaking engagements upon request.

The leadership team is complemented by Tim and Widy Verdouw, who manage both online and offline activities. Tim is also responsible for Life ConneXion's marketing strategy. The couple is married and has one daughter.

Legal Representation

Life ConneXion is legally registered as a religious organization with the Dutch Chamber of Commerce under number 50207040.

Additionally, there is a separate entity: the Life ConneXion Academy Foundation. This foundation is used for activities that fall within the scope of commercial transactions and/or are subject to VAT. While it donates surplus funds to the church and channels its reserves accordingly (as stated in its statutes), the foundation operates independently in terms of governance and policy.

The church has influence on the foundation's direction solely through the appointment of board members. In the event of the foundation's liquidation, its remaining assets will be transferred to the church.

Pastoral Responsibilities

Life ConneXion maintains two clear lines of responsibility: pastoral and legal.

Pastoral Oversight Structure:

- Supervisory Council (ie the board): This council oversees the pastoral leadership of Life ConneXion. Based on the guidance in 1 Timothy 5:19, members of the community may present concerns or accusations to this council. Regular contact ensures the council can provide guidance and correction when needed.
- Senior Pastors: Responsible for the spiritual well-being of members, visitors, and followers. They implement the church's vision and communicate biblical teaching to bring hope and transformation.
- Elders: Working alongside the pastors, the elders offer pastoral care and provide counsel. They are fully aligned with Life ConneXion's vision and mission and are encouraged to speak into the lives of others—including the senior leaders.
- Department Leaders: Appointed on a voluntary basis based on proven faithfulness, these individuals oversee various ministry departments.

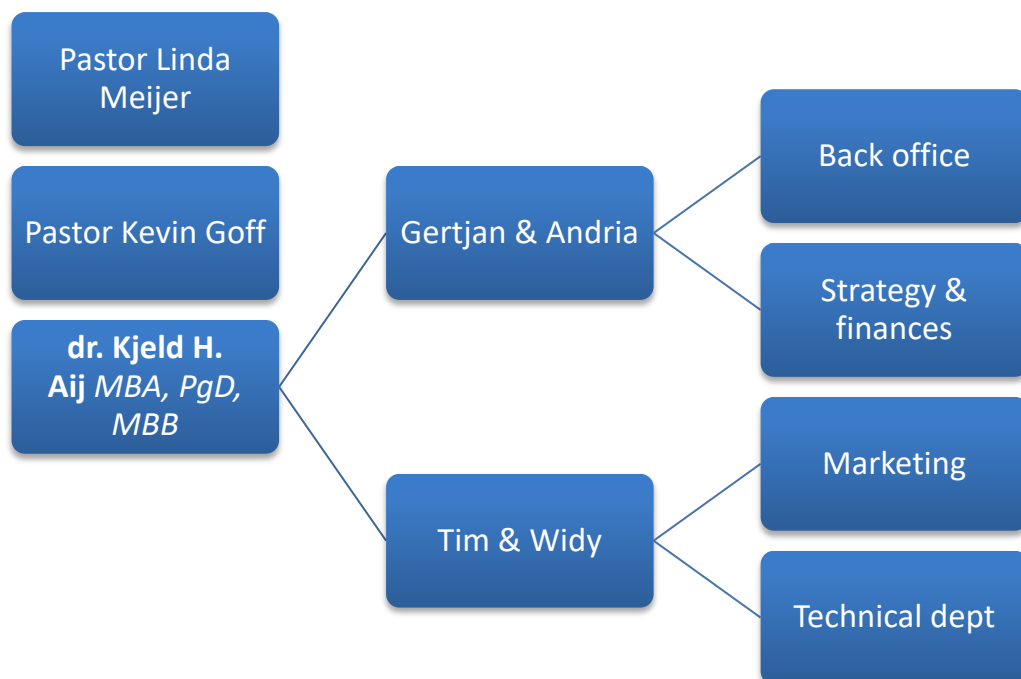
Supervisory Council (ie the advisory board)

The current advisory board includes Pastor Linda Meijer, Senior Pastor of Christian Church God's House and World Outreach Ministries, who, together with her husband Pierre Meijer, has been involved with Life ConneXion since 2002. Also serving on the board is Pastor Kevin Goff, Senior Pastor of The Rock Church USA, with campuses in Arizona and Oklahoma. Pastor Kevin's life story is marked by profound tragedy and trauma, which have uniquely shaped him into a deeply compassionate and insightful mentor for the leadership of Life ConneXion. From the heartbreaking loss of one of his sons in a car accident to the restoration of a once-broken relationship, his journey has equipped him with a rich well of empathy, wisdom, and

unwavering hope in the possibility of healing and restoration. He plays an active role in the leadership of Life ConneXion as well.

The board is further strengthened by Dr. Kjeld Harald Aij, MBA, who brings a unique combination of clinical and business expertise. As a nurse and business administrator with over twenty-five years of experience in healthcare, he has served since 2020 as one of the directors of Erasmus Medical Center, where he leads the (lean) transformation of the Netherlands' largest academic hospital. He is also an elder at The Church and has preached at Life ConneXion. Currently Kjeld also holds supervisory roles in other societal organizations, including the Supervisory Board of The Salvation Army (Netherlands).

This diverse and dynamic team provides a well-balanced support structure for the leadership of Life ConneXion—combining spiritual and organizational insight, national and international perspective, a connection to the church's past, and a clear vision for its future.



Legal Responsibilities

The legal board is responsible for entering into binding agreements and overseeing all official matters. The board consists of:

- Gertjan Goldschmeding – Chairman
- Evert van de Waal – Treasurer
- Arnold Vos – Secretary

This board is legally accountable for all strategic, financial, and fiscal decisions. For expenditures exceeding €3,000 or for long-term contracts, the approval of at least two board members is required (as stipulated in the statutes). Any legally binding document must be signed by at least two board members. Full governance procedures are detailed in the church's official statutes, available in the appendices.

III. Finance and Stewardship

The church's financial resources are used to:

- Equip individuals to live joyful, meaningful, and successful lives
- Support the poor and vulnerable
- Fund projects that benefit society, locally and globally

It is vital that financial stewardship is handled with the utmost care and integrity. As the Apostle Paul advised the church in Corinth, we too are committed to maintaining transparency and honor in our financial dealings.

"We want to avoid any criticism of the way we administer this liberal gift. For we are taking pains to do what is right, not only in the eyes of the Lord but also in the eyes of man." – 2 Corinthians 8:20–21

In other words, it is not enough to act with integrity before God alone; it is also essential to earn and maintain the trust of people. Clear procedures and public reporting create accountability and foster confidence, helping all stakeholders understand and support the mission.

Tithes, Offerings, and Contributions

Life ConneXion is funded through the generous contributions of individuals and support from businesses. Leaders are encouraged to develop their own streams of income through entrepreneurship, allowing them to serve without financial dependence on the church.

We share the Word of God freely and do not solicit financial support to meet our operational needs. Instead, the church exists to meet the needs of people.

We believe in giving generously—within the church, to individuals, and to ministries beyond our walls. Our teaching on giving emphasizes joy and freedom, never obligation or manipulation. We never give to earn God's favor, but as an act of stewardship and gratitude.

We rarely take up offerings during services, though we do not disapprove of churches that do. Structured giving, such as five-year commitments, is possible, but always initiated by the donor—not promoted by the church. This ensures all giving is wholehearted and voluntary.

Financial Principles and Procedures

Key principles include:

- Transparency (before God, the church, and all relevant authorities)
- Separation of duties in financial administration and payments (or at least internal control)
- Oversight by a finance committee to safeguard integrity
- Board approval required for all expenditures over €3,000
- All contracts exceeding €3,000 must be explicitly approved by the board
- Cash donations are deposited before use—never spent directly
- The exact financial position of Life ConneXion is always known and reported

Current roles involved in financial oversight include:

- Treasurer: Evert van de Waal
- Administration and reporting: Coincare BV

The following five procedures cover Life ConneXion's financial operations:

1. Invoice processing (procurement)
2. Reimbursements
3. Electronic donations (direct debit and transfers)

4. Cash flow (for catering and offerings)*

5. Compensation and honorariums

*Note: Since 2022, cash donations are no longer in use.

Budgeting and Expenditures

Each year, the church prepares a budget based on expected income and ministry goals. This is deliberately set just below the previous year's income to avoid financial pressure or over-reliance on fundraising.

The budget is approved by the board before the start of the year and published on our website. In addition to the current budget, financial results for the two preceding years are also publicly available at www.lifeconnexion.nl.

Appendices

Appendix 1 – Statement of Faith

1. **The Word of God**
We believe in the Bible as the infallible and inspired Word of God, our guide and highest authority in life.
2. **The Trinity**
We believe in one God, eternally existing in three persons: Father, Son, and Holy Spirit.
3. **Jesus Christ**
We believe in Jesus Christ as our Lord and Savior, the only begotten Son of God, conceived by the Holy Spirit and born of the virgin Mary. He lived a sinless life, was crucified, buried, and rose again. He accomplished our complete redemption and is now seated at the right hand of God. He is truly God and truly man.
4. **Salvation**
We believe that every person must receive salvation by grace through faith, by believing in and confessing the finished work of Jesus Christ.
5. **The Holy Spirit**
We believe that every believer should receive the empowerment of the Holy Spirit and speak in tongues as the initial physical evidence of this infilling. We are called to pursue the nine gifts of the Holy Spirit, given to the body of Christ.
6. **Water Baptism**
We believe in the practice of water baptism by full immersion, administered only to those who have made a conscious decision of faith.
7. **Communion**
We believe in the ordinance of the Lord's Supper, instituted by Jesus Christ, to be celebrated regularly in remembrance of the New Covenant in His blood.
8. **Physical Healing**
We believe that physical healing is provided for in the redemptive work of Jesus Christ and is available to every believer.
9. **The Church**
We believe that the true Church is composed of all who have been born again by the Holy Spirit through faith in Jesus Christ. This body of Christ is visibly expressed in local congregations and recognizes Jesus Christ as its Head.
10. **Eschatology**
We anticipate the soon return of Jesus Christ. We believe in eternal life in the joy of God's presence for those who have accepted His sacrifice, and in eternal judgment in hell for those who have rejected Him.

Appendice 2 – Report 2017

This past year was marked by preparation and rest, with the goal of launching a widely accessible program starting in 2018.

The focus was also primarily on strengthening mutual relationships and preparing the church culture for people who long for a new way of being a church. It is essential that current attendees do not adopt a judgmental attitude and that we learn not to judge people based on their behavior or values in life, but on the value they have as individuals.

New relationships were also established with ministries both domestically and abroad. There were more guest speakers from within the country in 2017 than in previous years.

In addition to the usual support for friendly ministries, contributions were also made to missionary projects—in Cuba (*Living Water Ministries*), *Terri Savelle Foy* (USA), *Asianchurch* (Pastor Rick Zachary), *Lance Wallnau* (USA), *Revealing Truth* (USA), *World Outreach Center* (Pastors Pierre and Linda, Netherlands). In total, we donated 12 percent of our income, in line with our objective. In 2018, we aim to donate 13 percent of our income.

Monthly donations slightly increased compared to 2016, and the expenses for housing were fully covered by the income from the Conference Center.

Appendice 3 – Report 2018

This past year (2018) was marked by the launch of the *Helemaal Gelukkig* ("Completely Happy") program. The goal of this program is to make it accessible to everyone, regardless of faith, background, or social status.

The focus was also primarily on strengthening mutual relationships and preparing the church culture for people who long for a new way of being a church. It is essential that current attendees do not adopt a judgmental attitude and that we learn not to judge people based on their behavior or life values, but on the value they have as individuals.

In addition to the usual support for friendly ministries, donations were also made to missionary projects in Sri Lanka (*Heavena*), *Terri Savelle Foy* (USA), *Jim Hockaday Ministries* (USA), and *The Jesus Way* (orphanage in India). In total, we donated 13 percent of our income, in line with our objective.

Monthly donations slightly declined, but incidental income increased compared to 2017. The housing expenses were fully covered by the income from the conference center.

Appendix 4 – Report 2019

This past year was characterized by transformation, with the goal of being ready by 2020—like a healthy family—for growth and influence in the country.

The focus was also primarily on encouraging initiatives from members and leaders.

The values were further developed, emphasizing that a church is a family where you belong regardless of your life circumstances, rather than an organization you only belong to if you qualify by meeting various (behavioral) rules. In that context, it is natural that current attendees do not adopt a judgmental attitude and that we learn not to judge people based on their behavior or life values, but on the value they have as individuals.

Unlike previous years, there were no additional outside speakers; instead, the internal speaker team expanded. During the summer months, everyone who had the desire to speak was given the opportunity, and several speakers stepped forward to cover various themes.

In addition to the usual support for ministries with whom we maintain close contact (Pastor Ford and Ms. Debbie Pickering [USA], and Pierre and Linda [Netherlands]), many initiatives focused on supporting the *Jesus Way* orphanage in Hyderabad, India. The family of Gertjan and Andria even visited and spent significant time with the founders and the children of the orphanage and the secondary school. An initiative was also launched to provide a special Christmas gift for the orphanage. More than 75 children were able to be sponsored by the church as a result. Additionally, 35 children are sponsored monthly by various families from *Life Connexion*. In total, we donated 11 percent of our income, in accordance with our objective. A significant reserve was also allocated for building maintenance, allowing a loan to be provided to *Connexion Point* for roof repairs and several other urgently needed replacements.

Monthly donations lagged behind the budget during the first months of the year but were more than compensated for in the final months

Appendix 5 – Report 2020

This past year (2020), due in part to the restrictions surrounding Covid-19, we focused on online activities. As a result, we saw a significant increase in the number of people engaged with us. The number of followers/likes on Facebook tripled to over 1,000, the number of YouTube subscribers rose to 1.43K, and our live-streamed events (*Hour of Prayer* and *Webinars on God's Economy*) were followed by an average of more than 300 people. Moreover, responses from across the country were very positive, and we noticed that people greatly appreciate our fresh, positive, victorious, and balanced message.

Additionally, 2020 was the year we were surprised by the tremendous response to our *Biblical Meditations*. We released several series after the mini-meditations (initially intended for our own teenagers) were listened to by over 8,000 people. The donations received as a result of these meditations enabled us to partner with an app developer. This app is expected to become available in March in the Play Store (Android) and App Store (iOS).

The vision of not making the church a heavy burden for its members but rather a warm family that encourages one another to make a difference in their own world is taking more and more shape. Here too, the investment in online activities contributes significantly. The power, need, and joy of meeting in person will always play a crucial role. The virtual opportunities we have discovered will only enhance this.

In addition to the usual support for friendly ministries and the missionary projects in India (*The Jesus Way*), we supported several projects in the Netherlands. Because income at the end of the year exceeded our expectations, we were able to give just under 10 percent. However, a reserve has been set aside, and we will assess which projects we can support in 2021.

Monthly donations were much higher than we had budgeted. This was largely due to donations related to the biblical meditations, but certainly also due to the increased generosity of Life Connexion's regular donors. This allowed us to provide a loan to *Connexion Point*, which enabled them to renovate the building.

Thanks to *Connexion Point*, we have had virtually no housing costs in recent years, although there was a backlog of maintenance (for example, the roof urgently needed replacement). Because the revenue from the Conference Center dropped away, we had to step in. We see this as a good investment, since the mission of the Conference Center is also to offer hospitality to society. By renting space to a Covid rapid testing site, the Conference Center is now at least breaking even.

Appendix 6 – Report 2021

The second year of the pandemic (2021) brought a new dynamic and focus to *Life Connexion*. We began to concentrate more on the needs within the country, particularly the need for practical teaching and tools. Additionally, the vision to allow local church activities to evolve more organically continued. This led to initiatives emerging from the members themselves or being carried by them. The traditional image of holding church services was replaced by being a church family.

Each month, one of the members organized a group walk, with special attention given to each individual. Within the constraints of Covid measures, we creatively sought ways to best serve both members and outsiders. For example, a three-part Zoom series on relationships was held. There was also a monthly time of meditation and prayer, streamed nationally, which drew hundreds of live participants. The webinars on *letting go* and *supernatural living* were also very well attended. As a result, for the second year in a row, we saw an increase in the number of people engaging with us. The number of followers/likes on Facebook tripled again to over 1,300, the number of YouTube subscribers rose from 1.43K to 2.76K, and our live-streamed events (*Hour of Meditation and Prayer* and *Webinars*) were followed by between 1,500 and 4,500 people. Moreover, the responses from across the country were overwhelmingly positive, and we noticed that people greatly appreciate our fresh, positive, victorious, and balanced message.

2021 was also the year we launched the *Be Still* Biblical Meditation App. It is now available in the Play Store (Android) and App Store (iOS) in the Netherlands, Suriname, and the Caribbean.

Monthly donations were much higher than we had budgeted. This was largely due to donations related to the biblical meditations, but certainly also thanks to the increased generosity of *Life Connexion*'s regular donors.

In addition to the usual support for friendly ministries and the missionary project in India (*The Jesus Way* children's home), we supported various projects within the Netherlands. A reserve has once again been created, enabling us to be ready to support projects aligned with *Life Connexion*'s vision.

Thanks to *Connexion Point*, we have had virtually no housing costs in recent years. There was a limited income again this year, which covered the housing costs, so *Life Connexion* did not need to step in financially, meaning we effectively had another year without housing expenses. However, *Connexion Point* has not yet been able to repay the loan due to a lack of resources.

Appendix 7 – Report 2022

In 2022, Life Connexion was faced with the absence of one of the pastors (Gertjan) due to illness.

The remaining leadership team took over his responsibilities during his absence. This disruptive period led to a comprehensive reevaluation of all activities. The needs of the members and the vision to equip the country prompted a change in the format of gatherings. Activities are now organized twice a month and are also livestreamed. These are being promoted, especially to the mailing list, which now includes over 15,000 people who have signed up to stay informed.

Due to a decline in the number of regular attendees, the 12 ministries (see page 14) have been adjusted. If attendance increases, these ministries will be reestablished more fully.

Members are regularly taking the initiative to organize activities together in order to strengthen mutual relationships. This aligns with the vision that the church should not be a top-down organization, but a family that functions in a healthy, connected way.

As a result, we have seen an increase in the number of people involved for the second consecutive year. The number of followers/likes on Facebook has tripled to over 1,300, and the number of YouTube subscribers has grown from 2.76K to 3.10K. Our livestreamed events (Hour of Meditation and Prayer and Webinars) were again followed by between 1,500 and 3,000 people, with a total viewing time of 18,474 hours (cumulative).

At the end of 2022, the *Be Still* Biblical meditation app was made available to the international market. A promotional plan will be developed for it in 2023.

Monthly donations were once again higher than budgeted. In addition to the usual support for partner ministries and the mission project in India (*The Jesus Way* children's home), we were also able to support multiple projects in Ukraine.

Thanks to Connexion Point, we have had virtually no housing costs in recent years. There was again a small amount of revenue, which covered the housing expenses so that Life Connexion did not need to step in—effectively resulting in another year without housing costs. However, Connexion Point has not yet been able to repay the loan it took on, due to a lack of available funds.

Appendix 8 – Report 2023

In June 2023, it was determined that the traditional model of church—with weekly services and all associated activities—could not be combined with the vision of being a church that serves people who do not wish to be involved in an institution.

The emphasis on equipping people to apply the message of God's principles for well-being and love in their lives makes it incompatible to also demand full dedication to maintaining the traditional structures of a church denomination.

Given the enormous fruitfulness and positive response from across the country to the online activities—and the lack of growth and impact in the physical gatherings—it became clear that there was no longer a foundation to continue in the traditional way. The message, mission, and focus are more needed than ever, but it was determined that this must now take place in a different form. Therefore, a pause was announced until further notice. The current focus is on developing podcasts, meditations, and other virtual activities, from which anyone around the world can benefit.

The building was sold to *The River Church*, which, in line with the mission of Life Connexion's predecessor (*Amersfoort Christian Center*), is shaping its church life in a more conventional manner. In every possible way, the leadership of Life Connexion supported a strong start for this church. The entire inventory was transferred free of charge, and there was close coordination to assist *The River's* staff in taking over the building and starting their services.

Monthly donations understandably declined significantly, but expenditures were also kept low. As a result, the annual financial outcome was only slightly negative (€6,000). We continued our regular support of partner ministries and the mission project in India (*The Jesus Way* children's home). In total, 14% of the income was donated to other charities and ministries.

Connexion Point generated revenue for the last year, which covered the housing costs.

In **2024**, the focus will be on the **repositioning of Life Connexion**—referred to as a “total reset.” The church organization has now established its office at *De Brand 32*, which is also the location of the *Life Connexion Academy Foundation*. This foundation focuses on publishing meditations and is affiliated with the Life Connexion church. It will also provide generous liquidity support to Life Connexion.

Life Connexion believes in the local church. The church represents God's family on earth. It does not oppose current forms of church but seeks renewal—where the church does not claim a central role as an organization or institution, but instead serves society and its members. While it has not yet found this form after 25 years, it has brought innovation. That innovation—as a source of inspiration—will continue to be its mission in the coming years. The specific implementation will be developed throughout the year and will become increasingly visible externally.

Appendix 9 – Report 2024

In 2024, a great deal of time and energy was invested in transferring the building to the church community *The River*, which continues the traditional way of being a church through weekly gatherings, using the facilities that were previously acquired by *Life Connexion*. Naturally, they have elevated these facilities to a higher level of professionalism. Several members of *Life Connexion* have found their new home in *The River*.

Life Connexion has taken a period of reflection and rest and has only occasionally organized activities in the past year. The only salaried staff member was fully incapacitated until the final month of 2024 but has since resumed work. It is expected that in 2025 more structure will emerge in the church concept of “a church without structure.” Attachment 10 contains an initial draft of the new vision document.

Appendice 10 – Elaboration on the vision 2025

The traditional approach to church can be adjusted, improved, stripped down, or expanded—but at its core, it often remains an organization that operates separately from society.

If we truly desire the Church to function as a living organism rather than a structured organization, we must adopt a radically transformational approach. As Jesus frequently said, “You have heard it said, but I tell you,” we are convinced that only ongoing renewal can break through the deception of religion and tradition.

In the book of Acts, the early Church naturally moved along the tracks already present in society. There were synagogues, shared meals, and gatherings in people’s homes. The Church simply used those existing rhythms to build a community of believers in Christ. The sacraments of Communion and Baptism were added, but otherwise, no new or foreign structures were imposed upon society.

In some cultures, such as parts of the United States, the Church is relatively well integrated into daily life. In department stores in Dallas, for example, the same books and music found in church bookstores are readily available, and attending church is a normalized part of the culture.

In contrast, here in the Netherlands, we live in a post-Christian society where Christian rituals and expressions are largely unfamiliar or even alien.

So we ask: **How would Jesus build His Church if He were to start it today, in Holland?**

The current tracks of society include social media, festivals, concerts, conferences, sports events, and informal social gatherings. These are decentralized, spontaneous, and community-driven—far from the formalized structure of traditional church life.

During the final phase of Life Connexion’s organized gatherings, God gave us a powerful image: a blank canvas displayed in our building, symbolizing the birth of a new vision. He made it clear that we were not to replicate other innovative church programs, but instead to wait for His direction—a vision for a Church seamlessly woven into the fabric of modern society.

One of the central deceptions we feel called to confront is this: many people begin their spiritual journey with a personal encounter with God, hungry to know their Lord and Savior. But as they plug into a church, the responsibility for their spiritual growth often subtly shifts to that institution. The church’s well-meaning but disempowering roadmap becomes their new guide. They begin to tithe, serve, attend every meeting (based on interpretations like Hebrews 10:25), volunteer, and participate in outreach—all under the impression that this structured commitment equals devotion to Christ.

However, many don’t realize that what they’re truly aligning with is not God’s personal call on their life, but the church’s institutional agenda. Their unique growth path is replaced with a one-size-fits-all framework. Instead of transforming society, they retreat from it—pouring their time and energy into sustaining the church’s internal operations.

Life Connexion’s mission is to empower people to walk personally and intimately with God. We equip them with spiritual tools, and more importantly, with a new paradigm: to *be* the

Church rather than simply *attend* one. To impact society by integrating with it—not separating from it.

We firmly believe in the value of spiritual family. Having a supportive church community is not just healthy—it’s essential. But our message is this: **you shouldn’t revolve your life around a church organization; rather, your church family should revolve around and support your life in Christ.**

We don’t yet know where this mission will take us or exactly how it will unfold. What we do know is that we’re laying a new foundation for a global community with a refreshing and relevant voice. Through our popular BeStill app, as well as podcasts, online teaching journeys, webinars, and social media content, we are building the groundwork for a movement.

We are currently developing what we call *The Perfect Church Concept*—a still-emerging vision based on Jesus’ promise: “Where two or three gather in My name, I am there in their midst.” This reminds us that the Kingdom can manifest anywhere two or three believers come together with intention and faith. Church can happen anywhere.

Life Connexion has always been a pioneering voice and a fresh sound in the Kingdom of God. We remain committed to that same mission, identity, and calling.